



Qubica Light

Installation manual

Rev.01 12/12/2017

ENGLISH

1 Introduction	5
1.1 Symbols used in this manual	5
1.2 Personnel requirements	5
1.3 Equipment required	5
1.4 Packaging Content	5
2 Safety	6
2.1 General safety information	6
2.2 Requirements for working in safety	6
2.3 Working environment	6
2.4 General information regarding the motorised product safety	7
2.4.1 Limit switch calibration	7
3 Maintenance	7
3.1 Troubleshooting Table	7
4 Technical data	9
4.1 Minimum obstacles table	9
4.2 Load on fixing components, according to the type of attachment	9
4.2.1 Wall installation.....	10
4.2.2 Ceiling installation	10
4.3 Exploded views	11
4.4 Coverage and installation diagrams	12
4.5 Supports	13
5 Wall bracket fastening	13
6 Structure installation	14
6.1 Installing the product on the brackets	14
7 Product inclination adjustment	15
7.1 Arm adjustment	16
7.2 Arm alignment	18
8 Completing the product.....	19

1 Introduction

This manual, and the others supplied with it (e.g. manual for the motor, remote control etc.) have been written by the manufacturer to provide the necessary information to those authorised to perform the assembly/installation of the components making up the product.

The operations described herein must be performed by persons with the training/skills required by applicable national standards and legislations (see Cap.1.2 "Personnel requirements", pag.5).

The pages and content contained within this manual must not be removed, rewritten or modified in any way.

This manual must be kept intact in an easily accessible location until the product is disposed of.

The Manufacturer reserves the right to update its products and their corresponding manuals without any obligation to update previous products and manuals.

The Manufacturer reserves all rights concerning this manual: no reproduction shall be permitted, in whole or in part, without its express written authorisation.

1.1 Symbols used in this manual

WARNINGS:



INFORMATION AND WARNINGS

Instructions and advice to help ensuring correct use and storage of the product. Failure to follow these instructions may compromise the product's integrity and/or strength.



CAUTION

Operator hazard! Instructions and warnings to be read and followed carefully. Failure to observe these instructions may put people's safety at risk.



CAUTION

Read the instructions carefully before using the product.

ICONS INCLUDED IN THIS MANUAL:



Width



Projection



Height

1.2 Personnel requirements

Personnel performing these operations must have technical knowledge of the product acquired by at least two years of experience or by a technical training course.

1.3 Equipment required

To ensure correct assembly of the mechanical and fabric parts, and thereby to ensure that the finished product works optimally, the following equipment is required:

- Drill driver
- Spirit level
- Complete set of tools
- Equipment for working at height (trestles, ladders, scaffolding, aerial platforms etc.) which meets applicable health and safety legislation.

1.4 Packaging Content

The product is supplied already equipped with folding arms, fabric and remote control (manual or motorised) and any other requested optional components.



Never move the arm supports from their position when they are in the provision.

2 Safety

2.1 General safety information

- Close the product completely in the event of bad weather or snow. Danger of damage or injury.
- Operations of assembly/installation and first use, adjustment and extraordinary maintenance must only be performed by technicians trained and specialised for those tasks, contact Technical Support.
- Do not place objects on the awning fabric.
- It is forbidden for people to hang or hold themselves on the product, this would create a serious risk of injury as well as potentially damaging the product itself.
- The Manufacturer shall not be held responsible for any damage resulting from either tampering or unauthorised modification of the product.
- All lifting and handling operations must be performed with the utmost care, making absolutely sure that unauthorised persons stay at a safe distance and that no one goes below any suspended loads, whether still or moving.
- Wear the personal protective equipment and any other safety clothing required by health and safety legislation.
- Take note of the following information, required to find the correct fastening position of the brackets, before starting the installation process:
 - product dimensions (box height and width, product projection when it's closed and when it's opened);
 - support bracket dimensions (see Chap. 6.2)
 - number of supporting arms (only for awnings with arms);
 - side of the product with the remote control mechanism;
 - dimensions of the wall/ceiling the product is to be installed on.



- Use the most suitable wall plugs for the type of wall the product is to be installed on.
- If the product is to be installed on a ceiling, DO NOT fasten the brackets to any hollow-pot supporting section; this would risk the product falling with serious consequences for people and damage to the product.
- All screws used on the aluminium components must be closed to a maximum tightening torque equal to that specified in the technical description of the screw itself. If a tightening torque is greater than the one who should be used, the castings and stainless-steel screws will be damaged. We therefore recommend using torque wrenches and electric screwdrivers.
- Use low-torque electric screwdrivers: applying high torque to stainless-steel hardware can cause the threads to seize, particularly for stainless-stainless or stainless-aluminium screws and threads.



- The fabric must not be loosened beyond the arm's tension because there's the risk for the fabric to re-enter the tube from below and to get damaged.

2.2 Requirements for working in safety

- The installation must be performed in full compliance with workers' health and safety legislation.
- Keep a safe distance between moving parts and any fixed obstacles (walls, terraces etc.).
- No ladders or other fixed objects must be installed or positioned near the structure such that the spaces it needed are reduced.
- Check, prior to use, that any temporary structures (trestles, scaffolding, ladders etc.) and all personal protective equipment (safety slings and harnesses etc.) meet the code and that are in good condition.
- Always use adequate personal protective equipment.
- If there is more than one installer, the work must be coordinated.
- The operators must follow the safety instructions they have received.
- If the product is to be installed above the ground-floor level of a building, the area must be cordoned off while the product is being lifted to this level to ensure nobody is beneath the suspended load.

2.3 Working environment

- Assembly and installation operations must be performed in an environment sufficiently lit by natural or artificial light (per applicable standards/legislation). The worker must have good visibility of the work to perform and must also prevent any unauthorised persons from approaching the work zone.
- Before installing any product, ensure that static, climate and planning checks have been performed to ensure the product is suitable for the installation in the chosen location.
- Also check that any necessary authorisation or planning permission has been obtained from the relevant authorities.

2.4 General information regarding the motorised product safety



- A motorised version of the product must not be installed in potentially explosive (ATEX) atmospheres.
- Use a lockable (key) switch if the product is to be installed in sensitive locations such as schools, colleges, hospitals, rest homes etc.
- If fitted, the opening/closing switch or dead man-type switch must be installed within the sight of the movement of the front profile but away from any moving parts, at a height which complies with national legislation in respect of disabled persons and children.
- If a manual release is supplied, it must be positioned at an accessible height.
- The minimum installation height of the product must comply with applicable laws; if it is not possible to comply with this requirement, products controlled by automatic devices must have a warning buzzer installed.

2.4.1 Limit switch calibration



Before the installation, check that the limit switches calibration is correct; if any adjustment are needed, follow the instructions given in the annexed "Engine Manual".

2.4.1.1 Electrical connections and installation



Electrical connections must be made by qualified and authorised personnel with the power supply shut off.
It is strictly forbidden to connect two or more engines to the same switch, due to the risk of induced currents which could damage the engines.

The installation of the motorised product involves the same procedure as that for the manual product, with the exception of the installation of the crank rod and motors with emergency control.

Instructions for electrical connection and operational programming are given in the "Engine Manual", supplied as an annex.



ALL MEASUREMENTS ARE GIVEN IN MILLIMETRES UNLESS OTHERWISE INDICATED.



Some figures could be of a general nature and not be referred to the product at issue.

3 Maintenance

3.1 Troubleshooting Table



All safety requirements must be followed in the event of faults or troubleshooting.

For faults and errors not listed in the following tables, contact Technical Support.

MANUAL AWNING

PROBLEM	CAUSES	SOLUTIONS
Fabric does not roll up evenly (forms cone)	Incorrect alignment of arms	Align the arms with respect to the end profile
The product jerks when opening, jams and movement is noisy	Incorrect alignment of arms	Align the arms with respect to the end profile
	Check that there are no obstacles preventing the terminal from sliding	Remove any obstacles

MOTORISED AWNING

PROBLEM	CAUSES	SOLUTIONS
Fabric does not roll up evenly (forms cone)	Incorrect alignment of arms	Align the arms
	Gust of wind	Unroll the fabric and eliminate any folds

PROBLEM	CAUSES	SOLUTIONS
Squeaking noise during movement of the product	Impurities/obstructions in moving parts	Clean and lubricate any moving parts
	Incorrect alignment of arms	Align the arms
	Wiring error/faulty motor	Check wiring/replace the motor
The product jerks when opening, jams and movement is noisy	Check that there are no obstacles preventing the terminal from sliding	Remove any obstacles
	Incorrect alignment of arms	Align the arms
The motor does not stop during the product closing phase	Incorrect programming	Repeat the programming, following the instructions in the "Motor Manual" supplied as an annex
The motor is very noisy	Wiring error/faulty motor	Check wiring/replace the motor
The motor stops after 4-5 minutes of continuous operation	Motor thermal cutout	Let the motor cool down
The product does not close in strong wind/rain	Faulty/unpowered rain sensor/anemometer	Replace the rain sensor/anemometer/ check correct power supply
	Motor not correctly programmed	Reprogram the motor
The product opens and closes on its own with a remote control system	Remote control battery flat	Replace the battery
	Anemometer/rain sensor operational	Wait for the wind/rain to stop
The product will not move	Remote control battery flat	Replace the battery
	Anemometer/rain sensor operational	Wait for the wind/rain to stop
	Lack of power supply	Connect the power supply
	Broken motor	Replace the motor
	Wiring error	Check that the wiring is correct
The product does not open or close fully	Incorrect programming	Repeat the programming, following the instructions in the "Motor Manual" supplied as an annex
	Anemometer/rain sensor operational	Wait for the wind/rain to stop

4 Technical data

4.1 Minimum obstacles table




(cm)		Ingombri minimi della tenda finita Minimum awning encumbrances, Encombrents minimum du store fini Mindestabmessungen der Markise Tamaño mínimo del toldo									
		160	185	210	235	260	285	310	335	360	
		196	221	246	271	296	321	346	371	396	

Fig. 1

4.2 Load on fixing components, according to the type of attachment



- Plugs calculations have been carried out considering their wind resistance class, in accordance to the legislation EN 13561.
- It is advisable to use all the available button holes on the stirrup. In the event that it is not possible, use the ones indicated in the figure.
- The information stated below are updated to the best of our knowledges. Still, it is a user's responsibility to apply them properly.
- The decision of the most appropriate fixing component depends on both the type of our basic material and on the physical state thereof. The verification of the material's basic status it's assigned to the installer before fixing the product.
- The decision regarding the fixing component must be carried out verifying the recommended loading values, which are listed in the supplier of reference's General Catalogue.
- In case of a corrosive environment, it is advisable the use of stainless-steel fixing components.

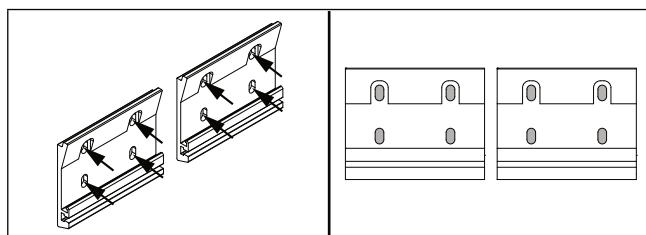
The value in the table is in KN and expresses the extraction load of the plug that is under the greatest stress. These values are required for the selection of the most suitable anchoring, based on the type of material upon which the product will be installed.

Example: awning with wall mount

- Awning dimensions: 500x210 - load on wall plug: 4,22 KN - Basic material: C25 non-cracked concrete.

Recommended plug according to Hilti's General Catalogue: HST M10.

4.2.1 Wall installation

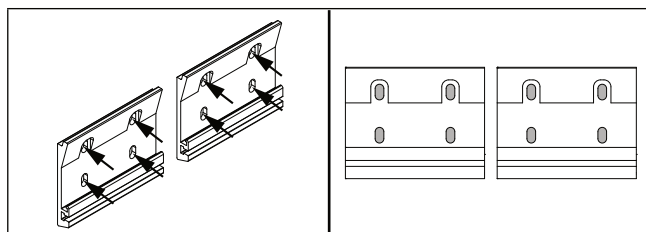


200mm BRACKET

Fig. 2

KN		<div> <div>XXX</div> <div>cm</div> </div> (cm)									
		150	200	250	300	350	400	450	500	550	600
<div> <div>XXX</div> <div>cm</div> </div> (cm)	160	-	1,12	1,38	1,63	1,88	2,13	2,39	2,64	2,89	3,15
	185	-	-	1,76	2,08	2,40	2,73	3,05	3,37	3,70	4,02
	210	-	-	2,21	2,61	3,01	3,42	3,82	4,22	4,63	5,03
	235	-	-	-	3,18	3,67	4,16	4,65	5,14	5,64	6,13
	260	-	-	-	3,80	4,39	4,98	5,57	6,16	6,75	7,33
	285	-	-	-	-	5,17	5,87	6,57	7,26	7,96	8,65
	310	-	-	-	-	6,04	6,85	7,66	8,48	6,57	7,13
	335	-	-	-	-	-	8,03	8,96	7,01	7,66	8,31
	360	-	-	-	-	-	9,14	7,22	7,95	8,69	9,43

4.2.2 Ceiling installation



200mm BRACKET

KN		<div> <div>XXX</div> <div>cm</div> </div> (cm)									
		150	200	250	300	350	400	450	500	550	600
<div> <div>XXX</div> <div>cm</div> </div> (cm)	160	-	1,12	1,37	1,63	1,88	2,13	2,38	2,63	2,89	3,14
	185	-	-	1,75	2,08	2,40	2,72	3,05	3,37	3,69	4,02
	210	-	-	2,20	2,61	3,01	3,41	3,82	4,22	4,62	5,02
	235	-	-	-	3,17	3,66	4,15	4,65	5,14	5,63	6,12
	260	-	-	-	3,79	4,38	4,97	5,56	6,15	6,74	7,33
	285	-	-	-	-	5,17	5,86	6,56	7,25	7,95	8,65
	310	-	-	-	-	6,04	6,85	7,66	8,47	6,56	7,12
	335	-	-	-	-	-	8,02	8,95	7,01	7,66	8,30
	360	-	-	-	-	-	9,13	7,21	7,95	8,68	9,42

4.3 Exploded views

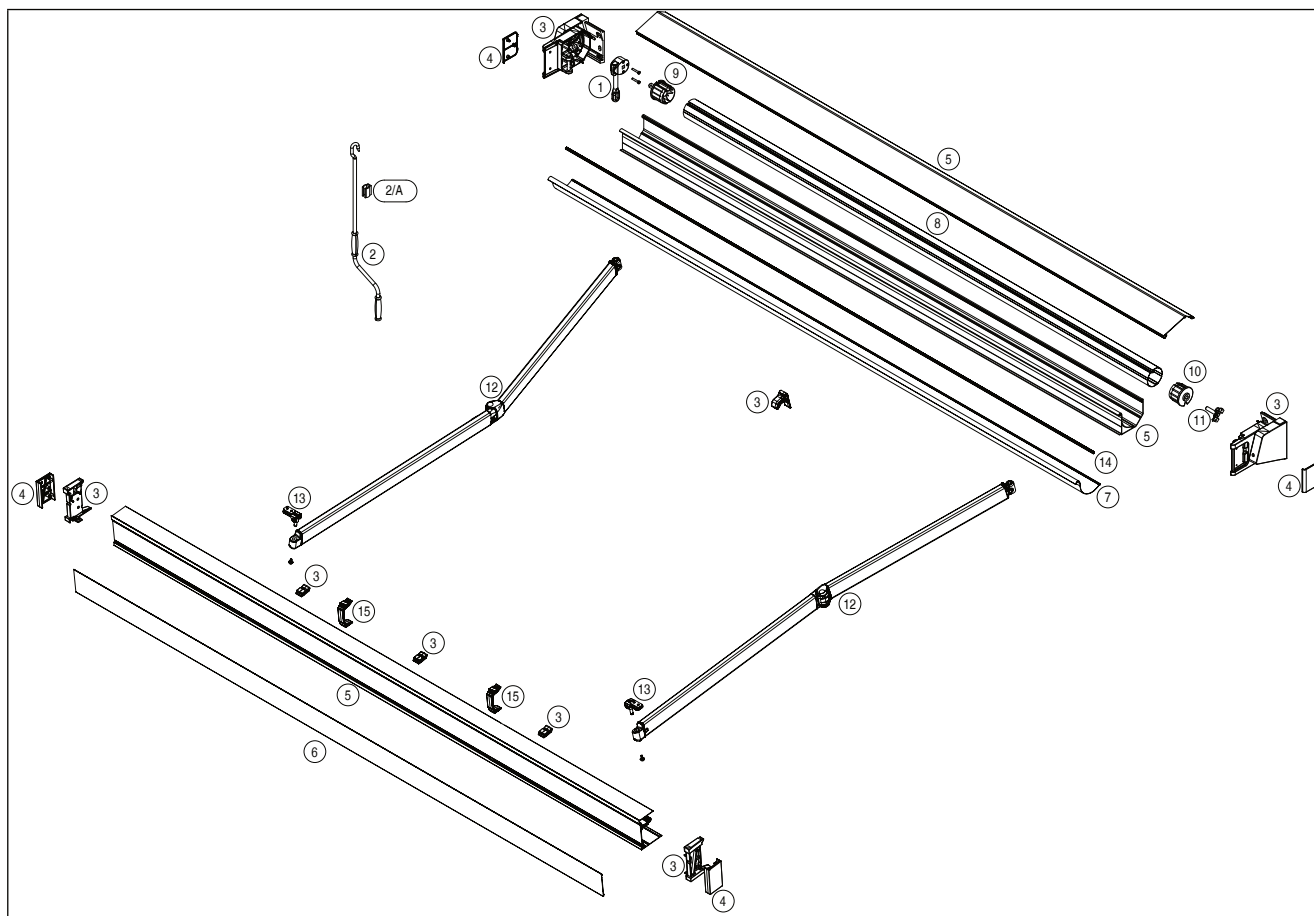


Fig. 3

1	Gear	9ARG--699102
1/A	Gear screws set M6x45mm	9CVA--521001
2	Crank rod	9AMX--699001
2/A	Crank rod clip	9FAM--699001
3	Complete supports set	9KBU--582003
4	Covers for box and front bar end covers	9CTU--582011
5	"Qubica Light" profiles set	9KFX--582004
6	Frontside cover	9FDX--580004
7	PVC fabric-saving profile	9ALX--545007
8	Ø80mm "Rollerbat"	9TAX--350004
9	Ø80mm cap with 13x35mm square pin	9LPQ--821080
10	Ø80mm cap with Ø14mm hole and bearing	9LFX--821280
11	H1,16" plate with sliding round pin	9CIE--160002
12	Arms with belt "Balteus"	9BHG--318016
13	Runners for "Spin" arms	9CCC--318001
14	Gasket	9GBX--530001
15	Arm picking runners	9SCR--580001

4.4 Coverage and installation diagrams WALL INSTALLATION

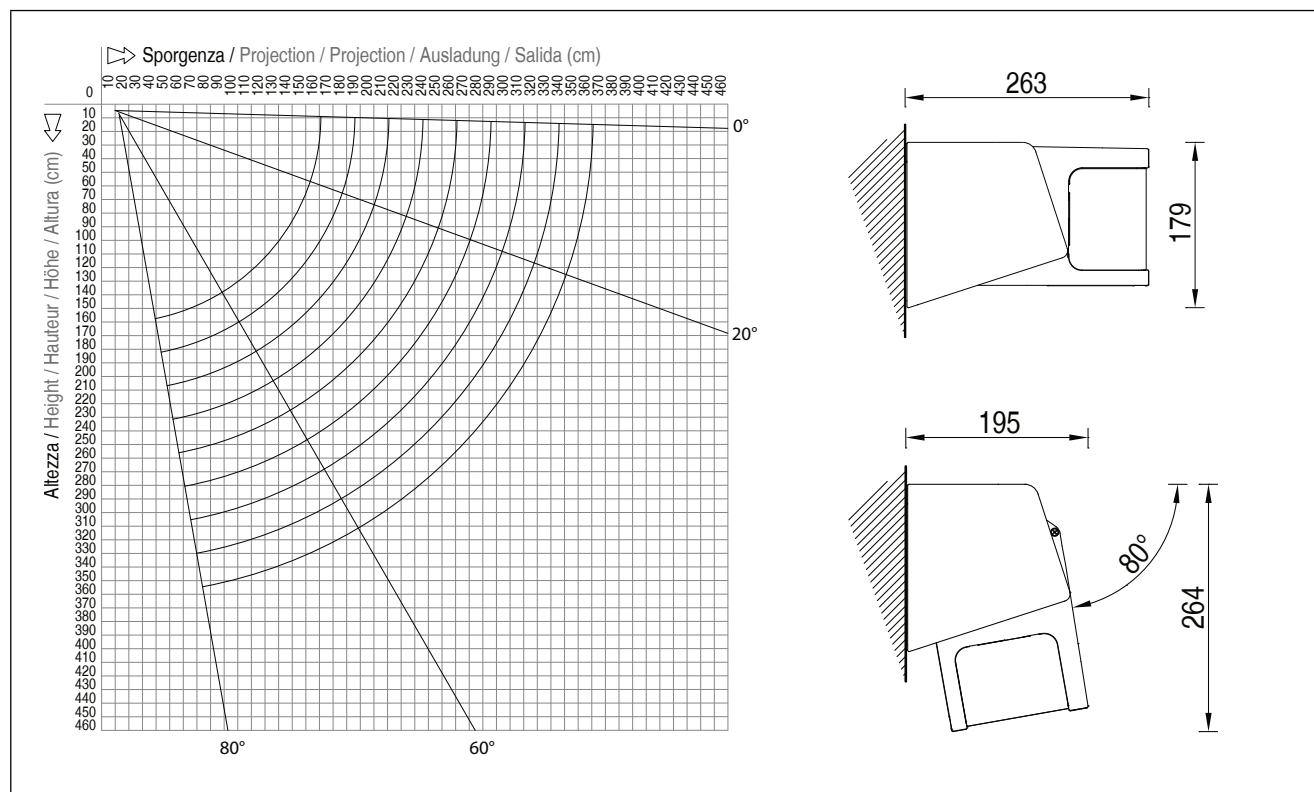


Fig. 4 Motorized control: 0°-80° - Manual control: 0°-50°

CEILING INSTALLATION

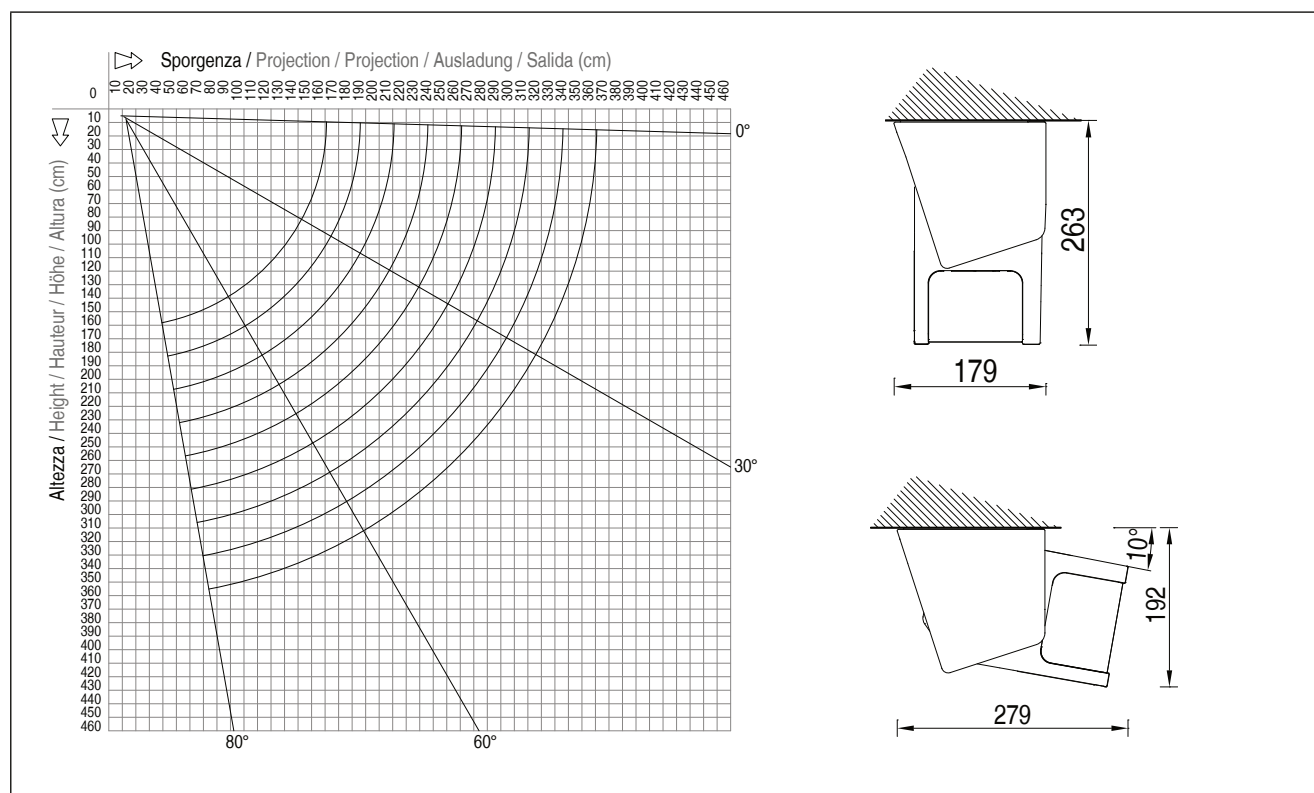


Fig. 5 Motorized control: 10°-80° - Manual control: 10°-50°

4.5 Supports

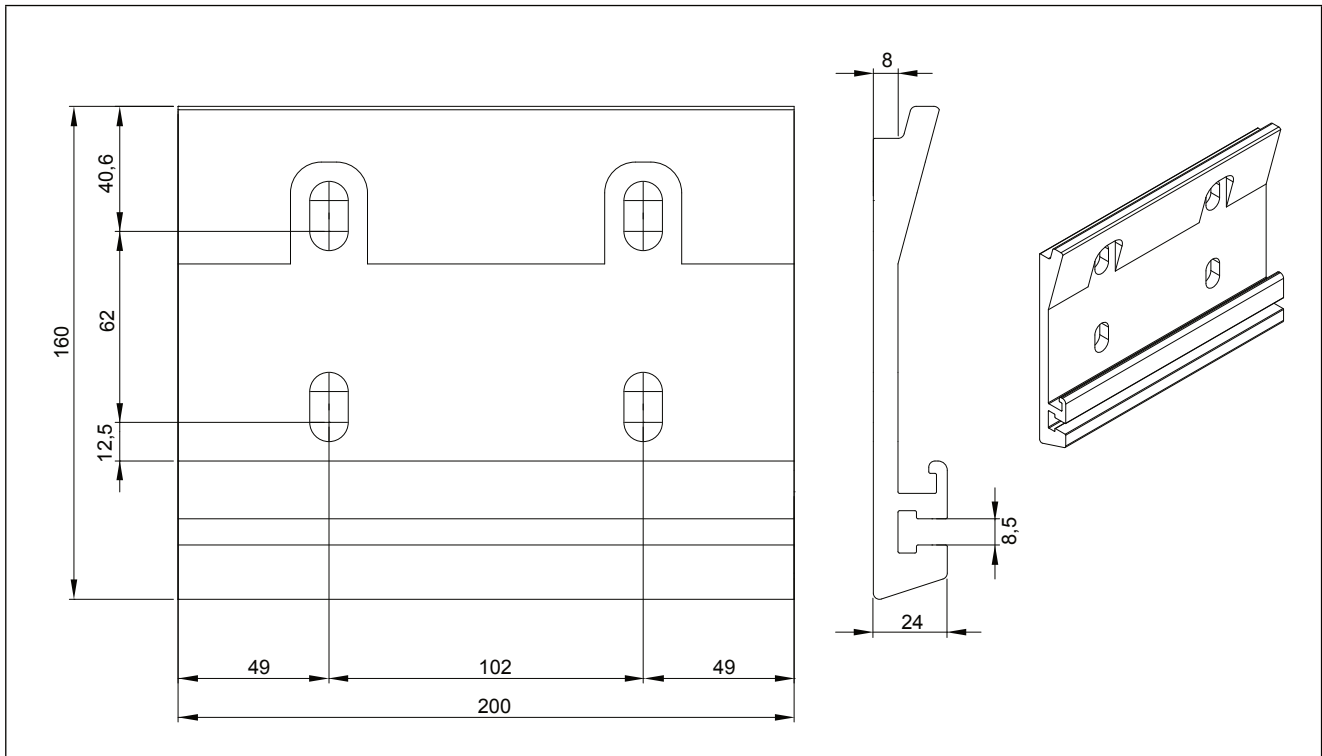


Fig. 6

5 Wall bracket fastening

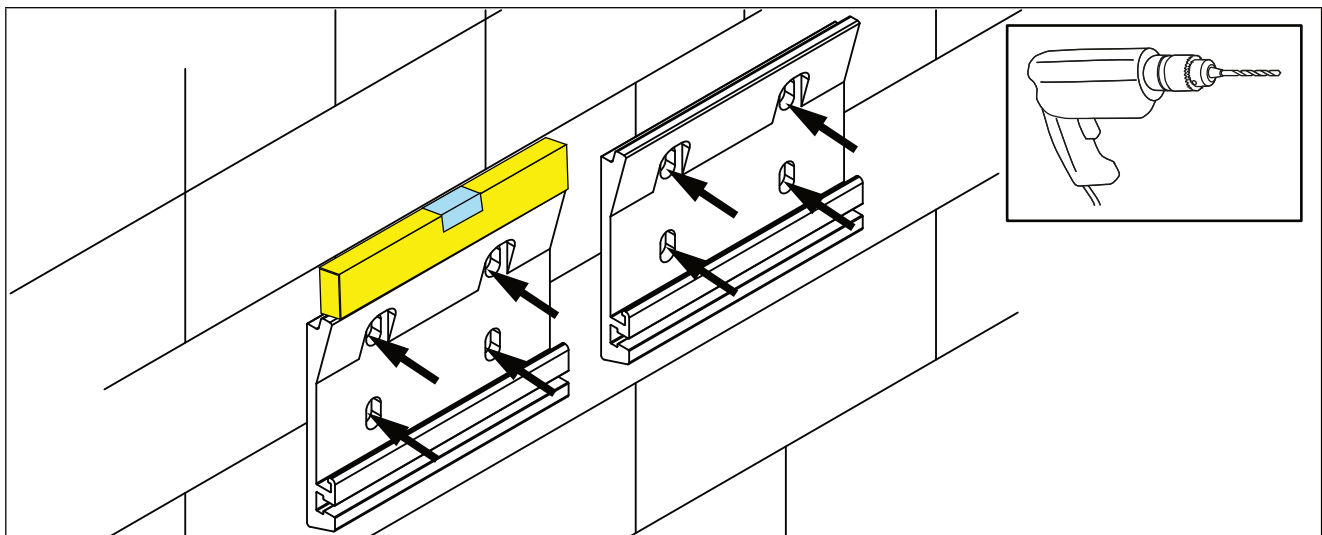


Fig. 7

6 Structure installation

6.1 Installing the product on the brackets

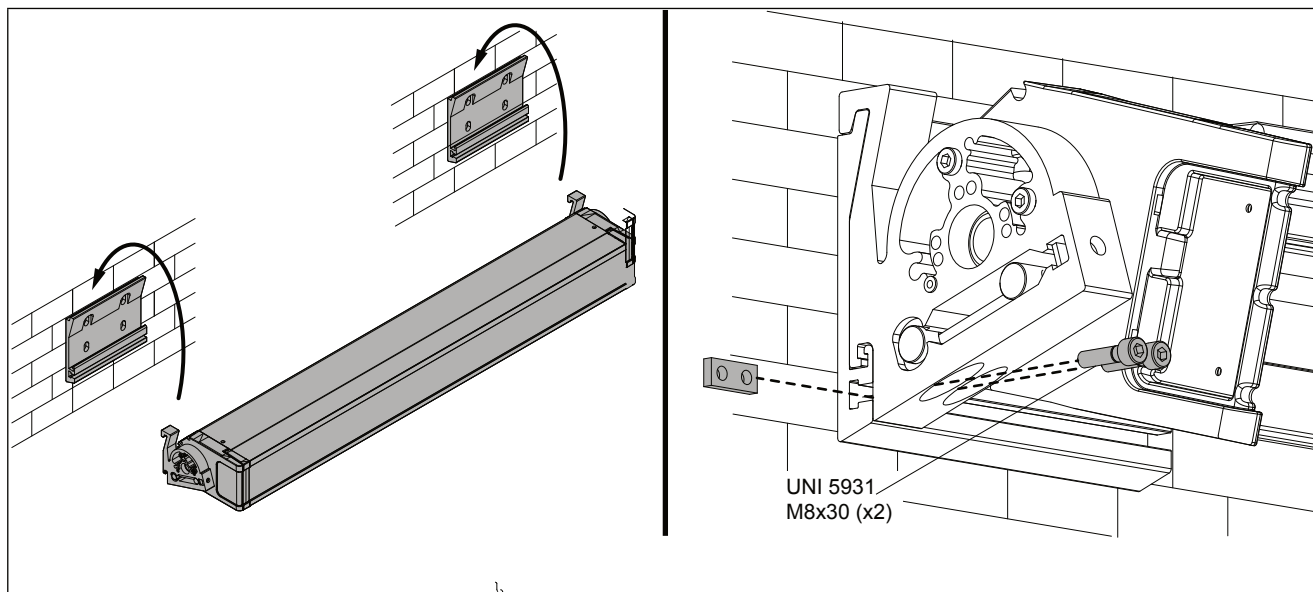


Fig. 8

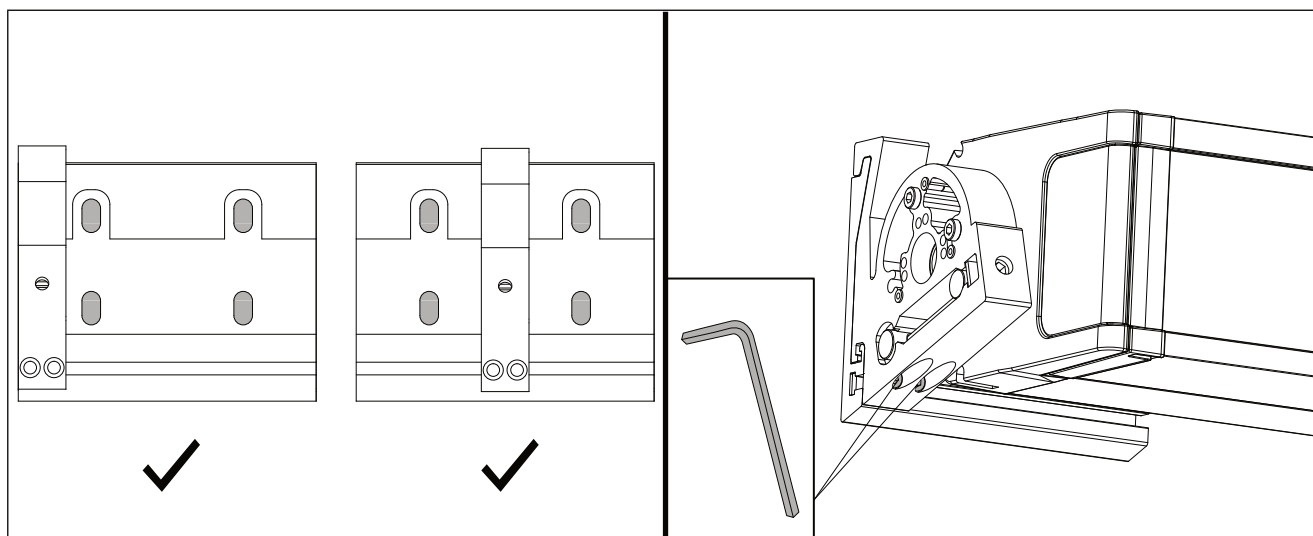


Fig. 9

7 Product inclination adjustment

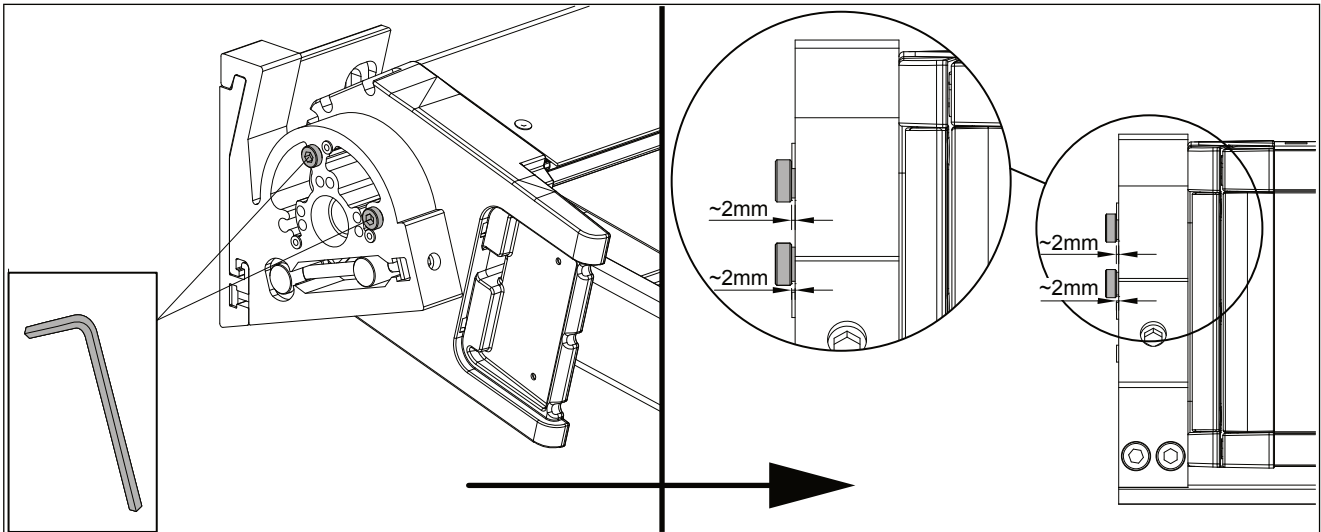


Fig. 10

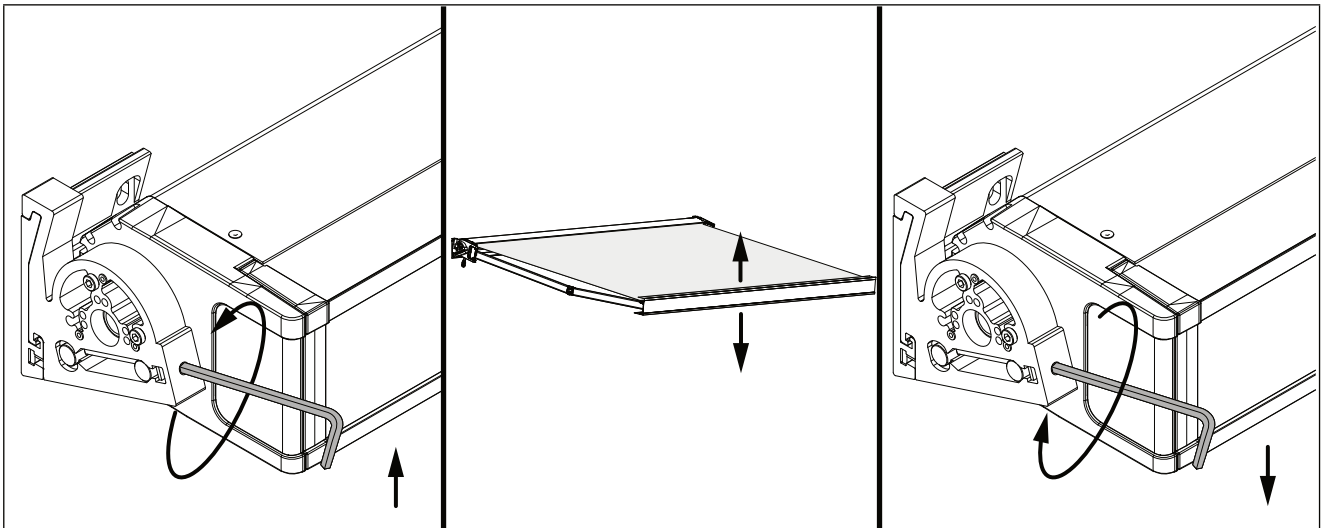


Fig. 11

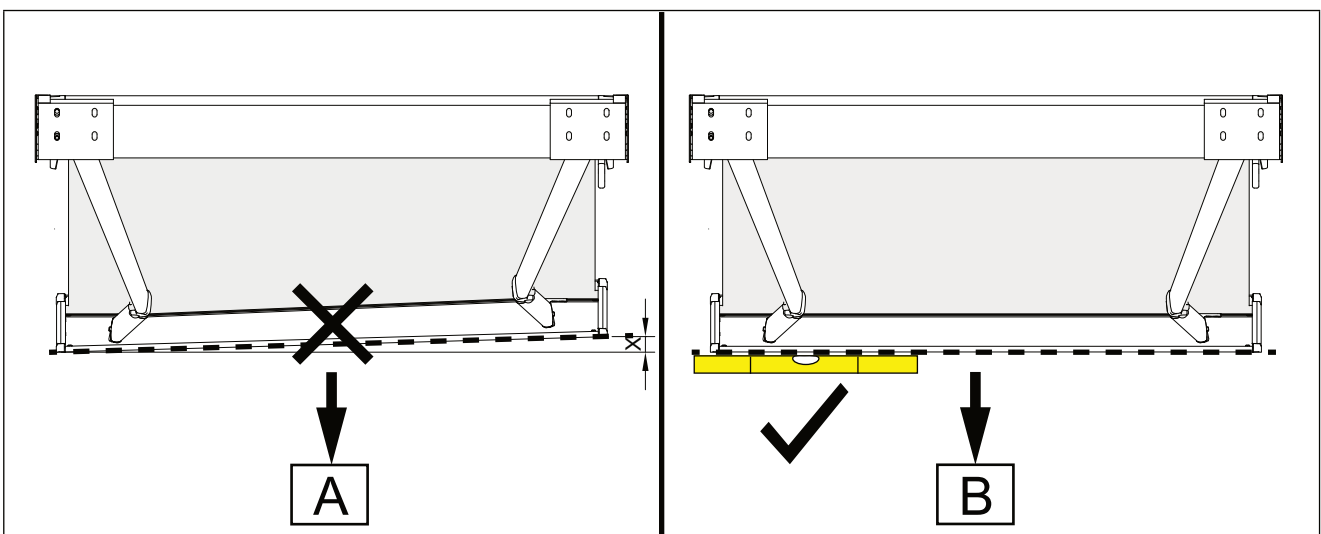


Fig. 12



A)] See "Fig. 11" Pag. 15; B) "Fig. 13" Pag. 16

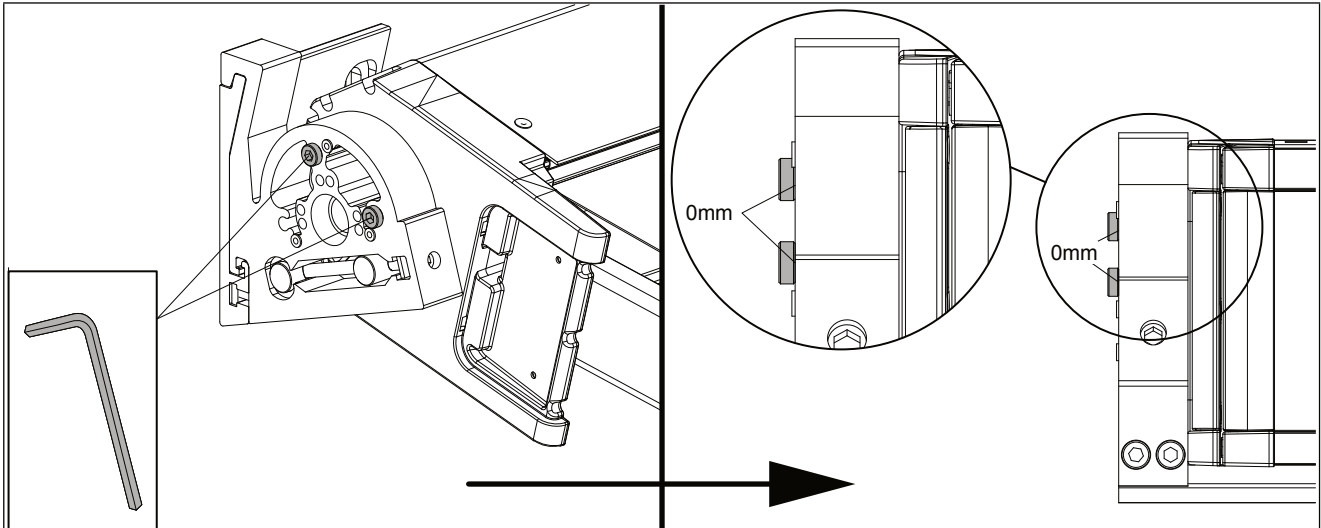


Fig. 13

7.1 Arm adjustment

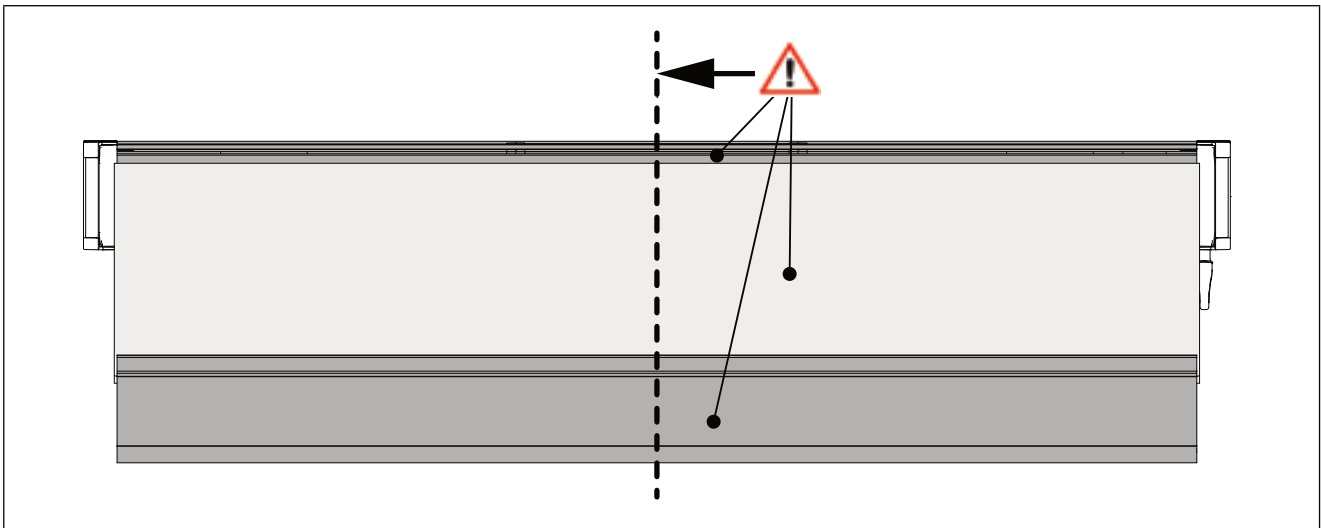


Fig. 14

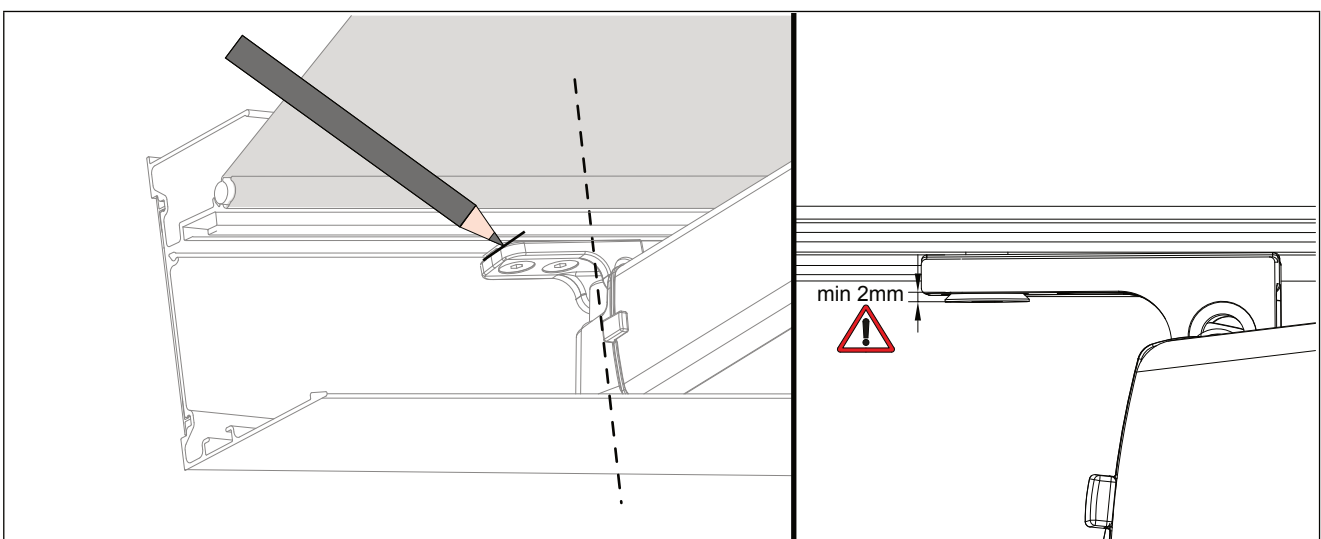


Fig. 15

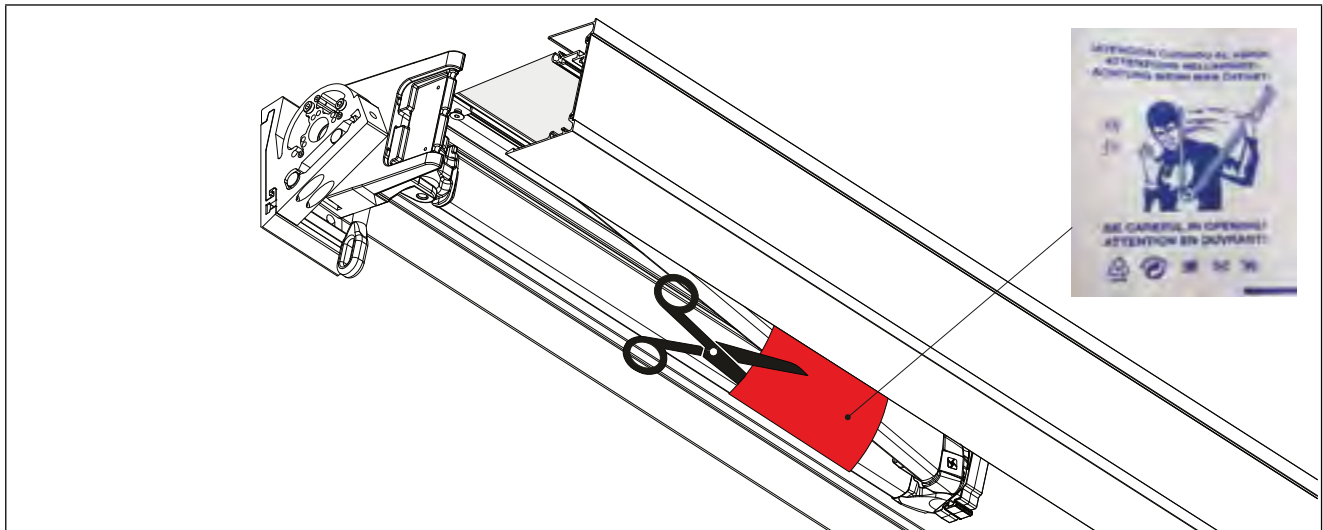


Fig. 16

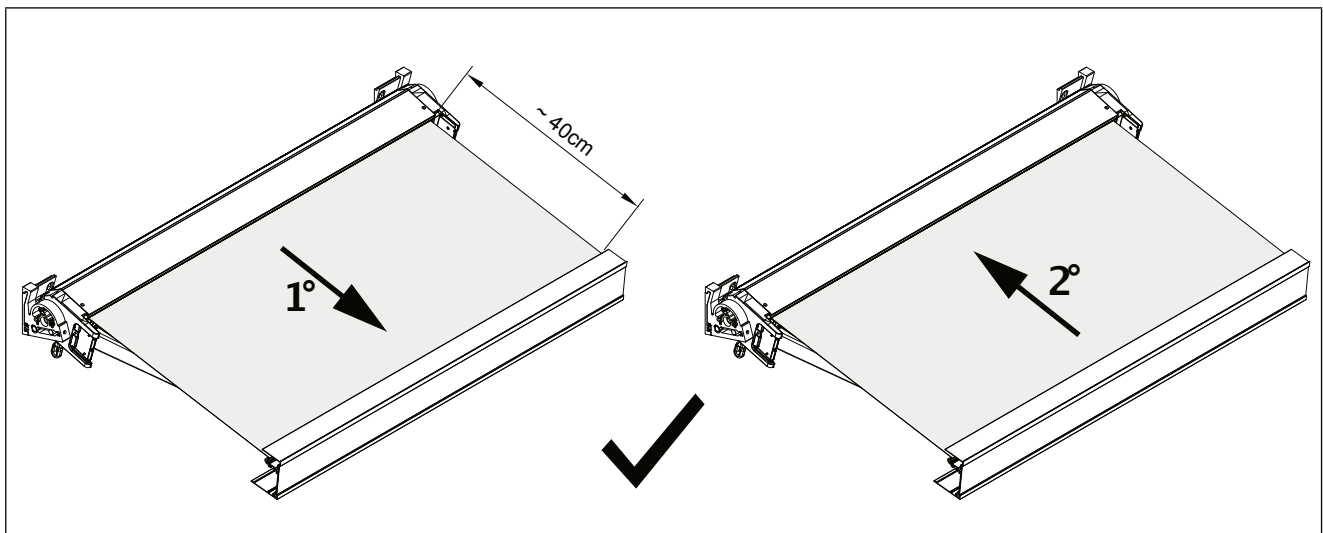


Fig. 17

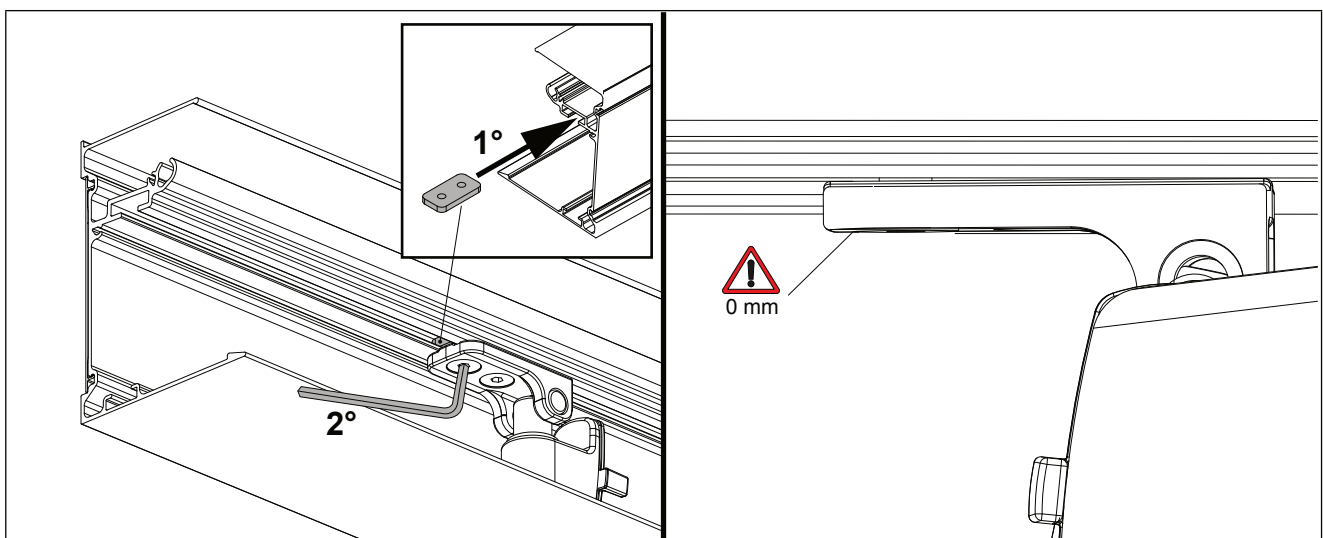


Fig. 18

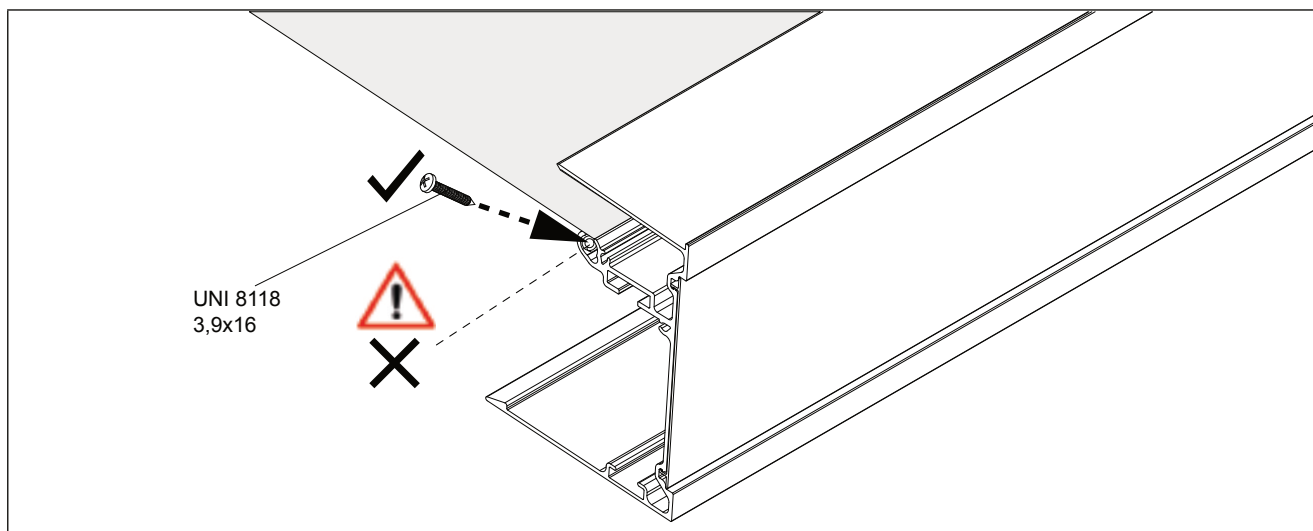


Fig. 19

7.2 Arm alignment

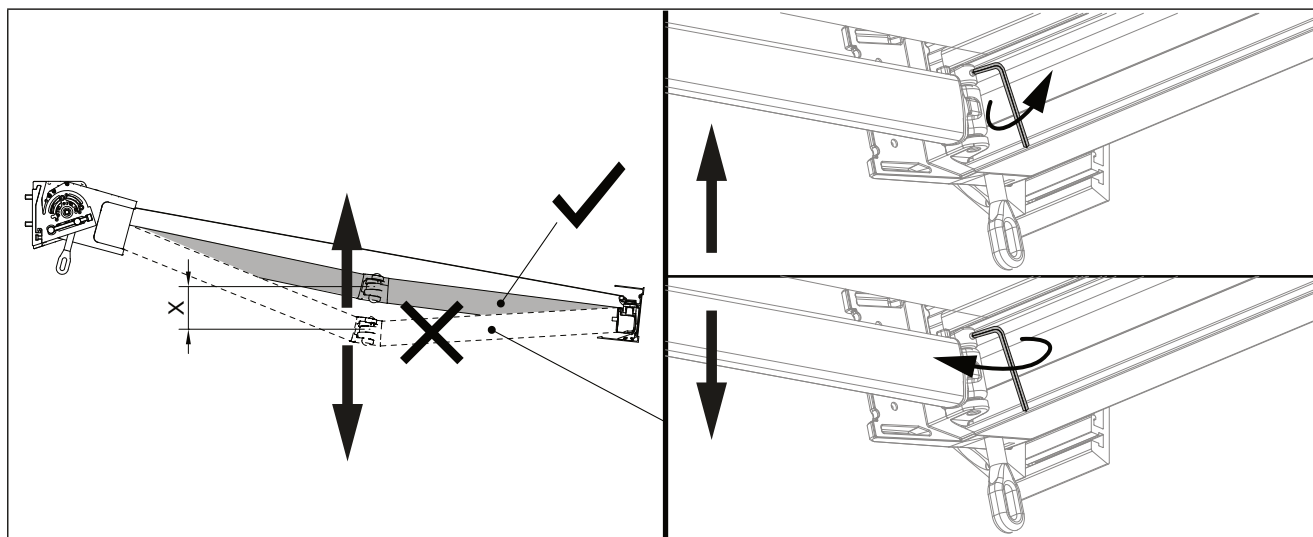


Fig. 20

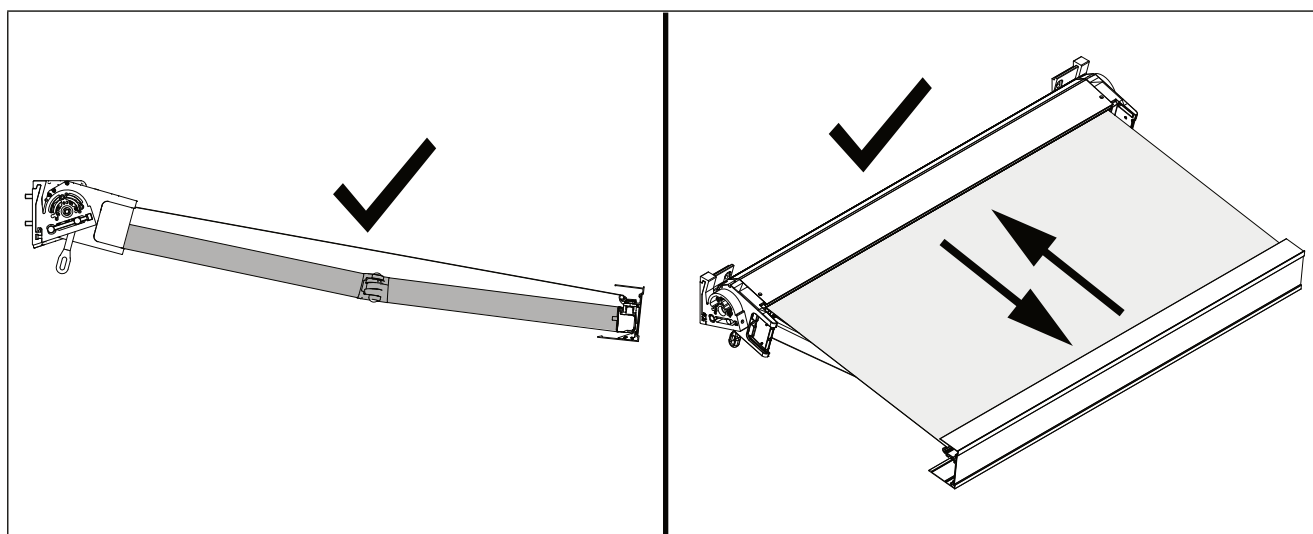


Fig. 21

8 Completing the product

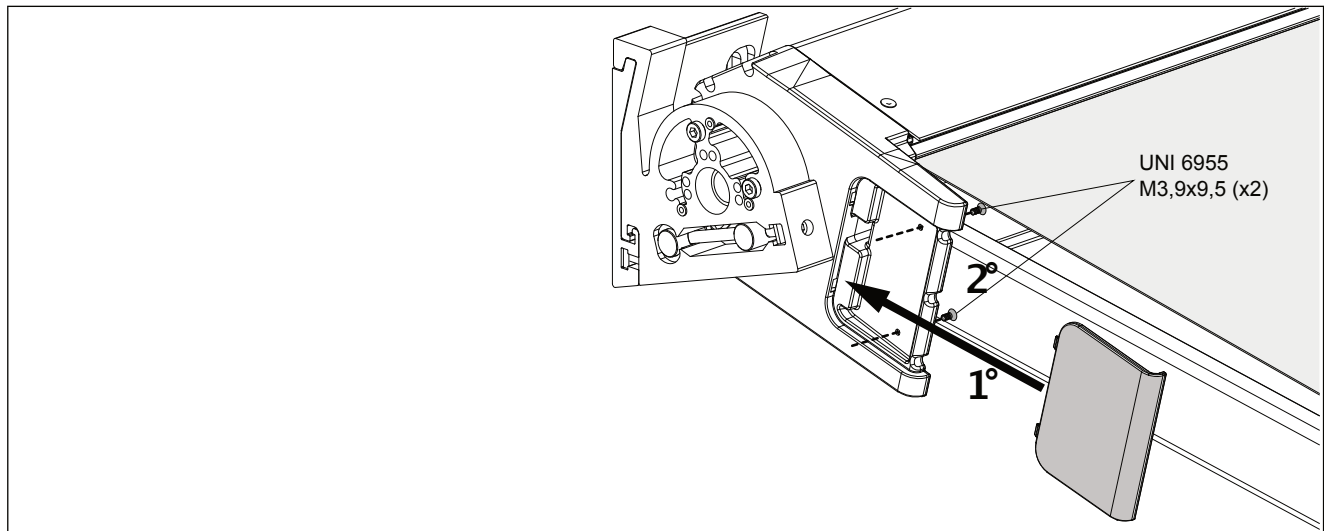


Fig. 22

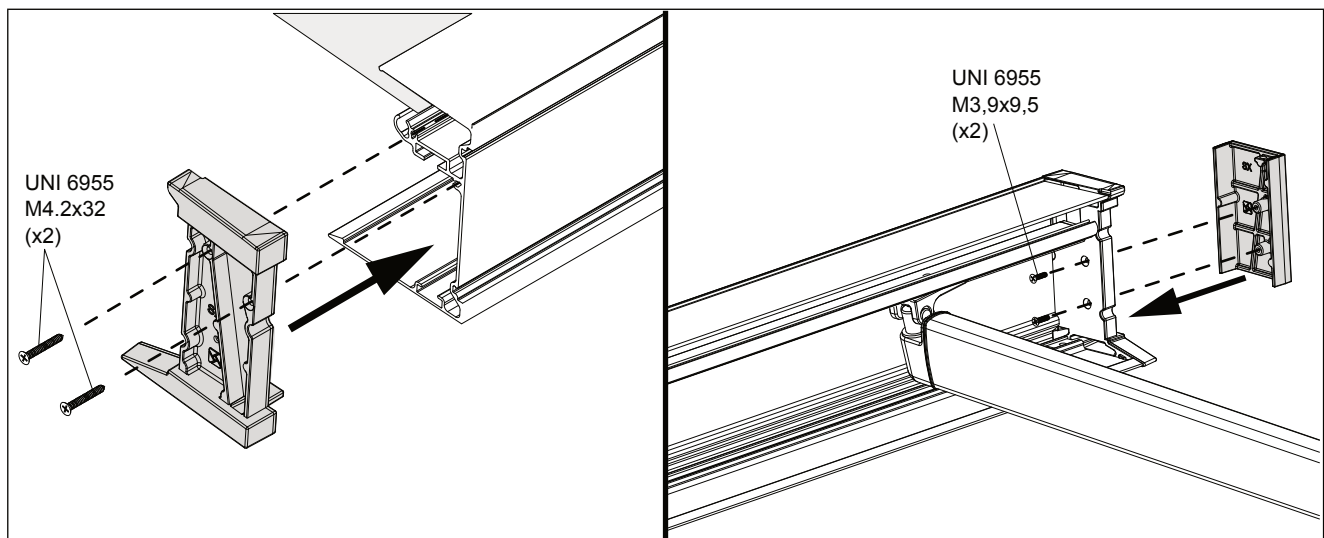


Fig. 23

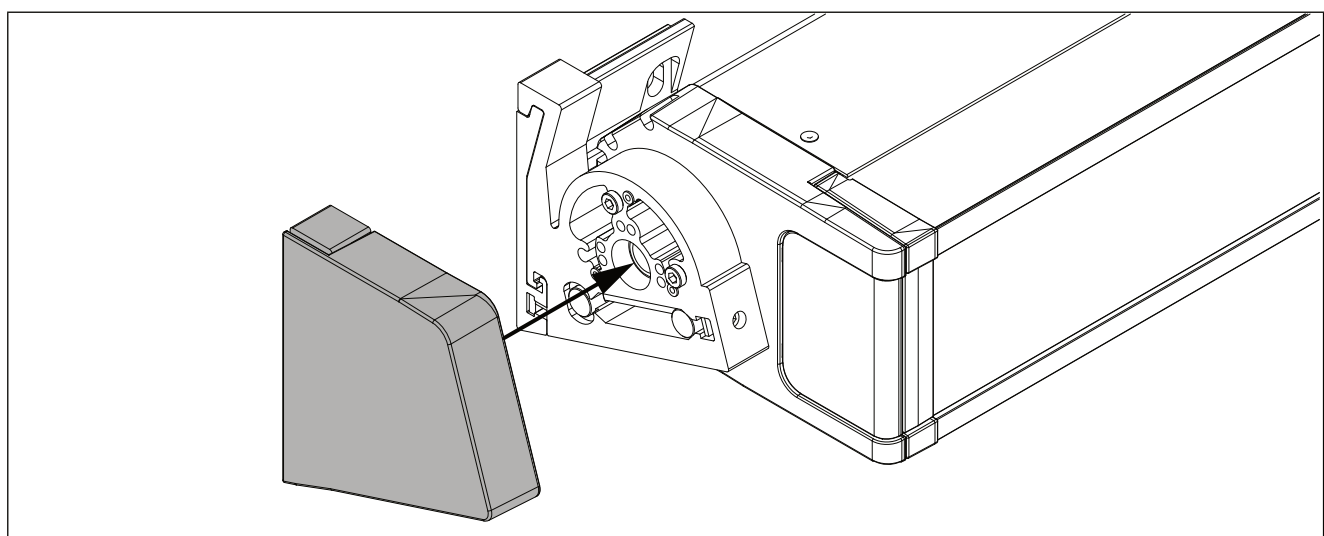


Fig. 24

**KE PROTEZIONI SOLARI srl****Sede**

Via Calnova, 160/a
30020 Noventa di Piave (VE) - Italia
T + 39 0421 307000 r.a.
F +39 0421 658840

Filiale di Varese

Via Matteotti, 21/23
21030 Rancio Valcuvia (VA) - Italia
T +39 0332 994083
F +39 0332 994156

Filiale di Pistoia

Via Rubattorno, 89/91
51039 Quarrata (PT) - Italia
T +39 0573 797201
F +39 0573 1712084

www.keoutdoordesign.it
info@keitaly.it

KE FRANCE sas

Route de Landouville
28170 Tremblay-Les-Villages
France
T +33 02 37648383
F +33 02 37653072
www.keoutdoordesign.fr
service.clients@kefrance.fr

KE DURASOL

445 Bellvale Road
Chester NY 10918
T +1 888 378-2765
F +1 845 692-1101

CALIFORNIA DIVISION

1510 S. Auto Center Drive
Ontario, CA 91761
T +1 844-387-2765

COMMERCIAL DIVISION

38 Pond Lane, Suite B
Middlebury, VT 05753
T +1 802-388-7309
www.keoutdoordesign.us

GENNIUS FRANCE sas

Zac Ducourmau
Quartier Des 4 Chemins
83340 Flassans Sur Issole
T +33 04 94781773
F +33 04 94047932
www.keoutdoordesign.fr
info@genniusfrance.fr

KE GENNIUS IBÉRICA, S.L.

Travesía Cuenca - 3, núm.2
Pol. Ind. Camporosso
Apartado de Correos n°22
02520 Chinchilla de Monte Aragón
Albacete
T +34 967 099 301
F +34 967 261 584

www.keoutdoordesign.es
info@genniusiberica.es

MADE IN ITALY



exo